

Providing New Medical Care with Friendly Service

Professor

Takamasa Kayama

Department of Neurosurgery
Major of Environmental Life
Science
Graduate School of Medical
Science

Everything is for the patient

Protect the brain with diagnosis and treatment using the world's most advanced technologies

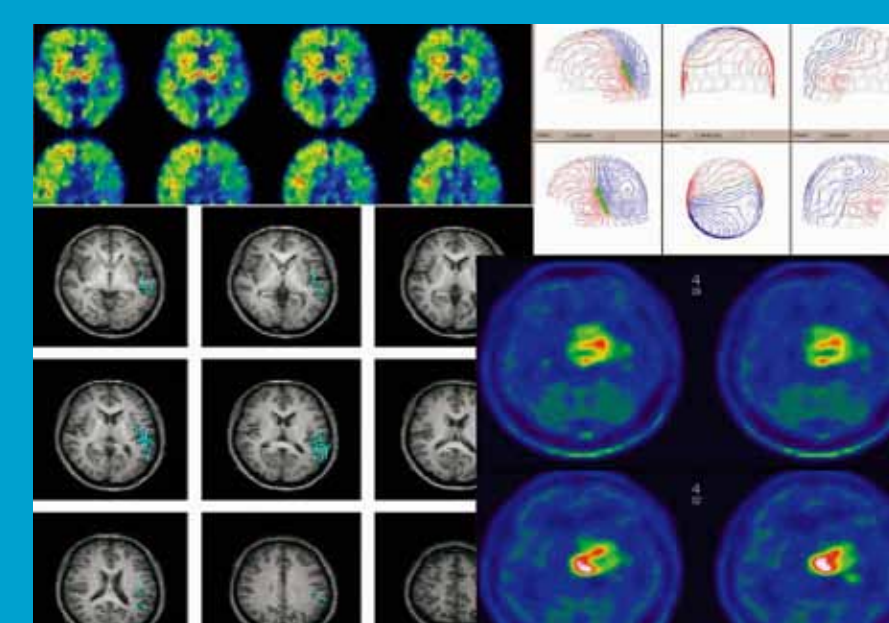
The brain is the distinguishing source of humanity; curing disease and protecting the brain are more important than anything else. Awake surgery is the prime protection for everything. In awake surgery, the patient temporarily comes out from under anesthesia, the brain functions are checked, and the lesion is excised while the brain is protected. We have helped to pioneer awake surgery in Japan and have performed treatment with outstanding techniques for brain tumors, cerebral aneurysms and other challenges. Our diagnosis and operating environment uses the most advanced equipment required for neurosurgical operations such as the intraoperative high field MRI system, which is found at few hospitals in Japan, the PET system that enables observing brain metabolism and circulation, and MEG (magnetoencephalogram), with which brain functions can be viewed.

Curing diseases without surgery

Diseases can also be cured without surgery. Working to conquer malignant cerebral tumors, a disease that is one of the hardest to treat, we have studies with new drugs designed to target cancer stem cells and neurogenesis for revitalizing functions after strokes. Working to eliminate strokes, which are a Japanese national disease and have an especially high rate in the Tohoku Region, the northeastern area of Japan, a stroke registration project has been established in Yamagata prefecture to study epidemiology. The project is at the maximum level as a community based study in Japan.

Educating doctors for the future

Passing on wisdom and techniques is essential for further developing future medical services. We educate our students and interns to provide medical education that will be useful on site, based on the attitude of learning from patients, with the motto that our students and interns shall focus on each case at hand, think by themselves and develop their eyes to examine their patients.



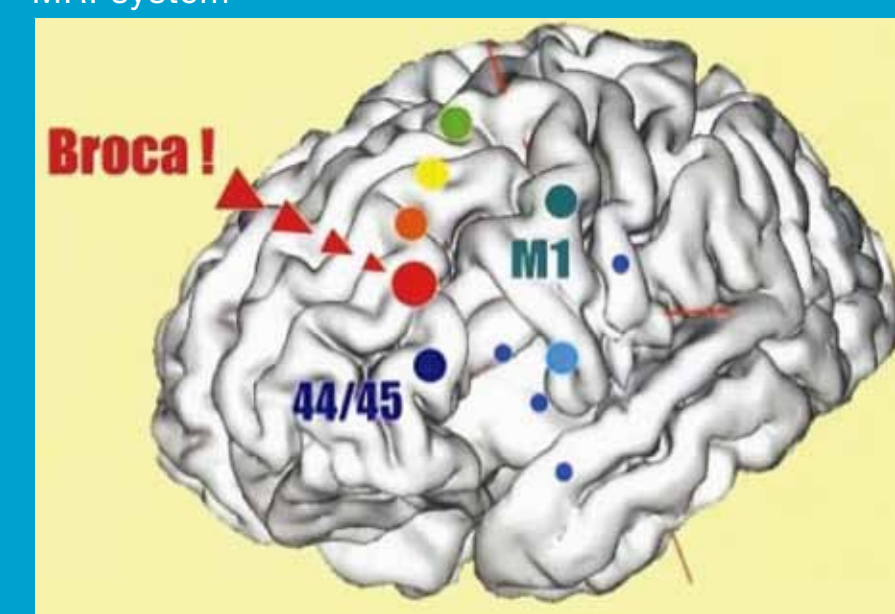
Diagnostic imaging by fully using PET and MEG



World's most advanced intraoperative high field MRI system



Educating students with professor's rounds



Brain function mapping

Yamagata University, Faculty of Medicine